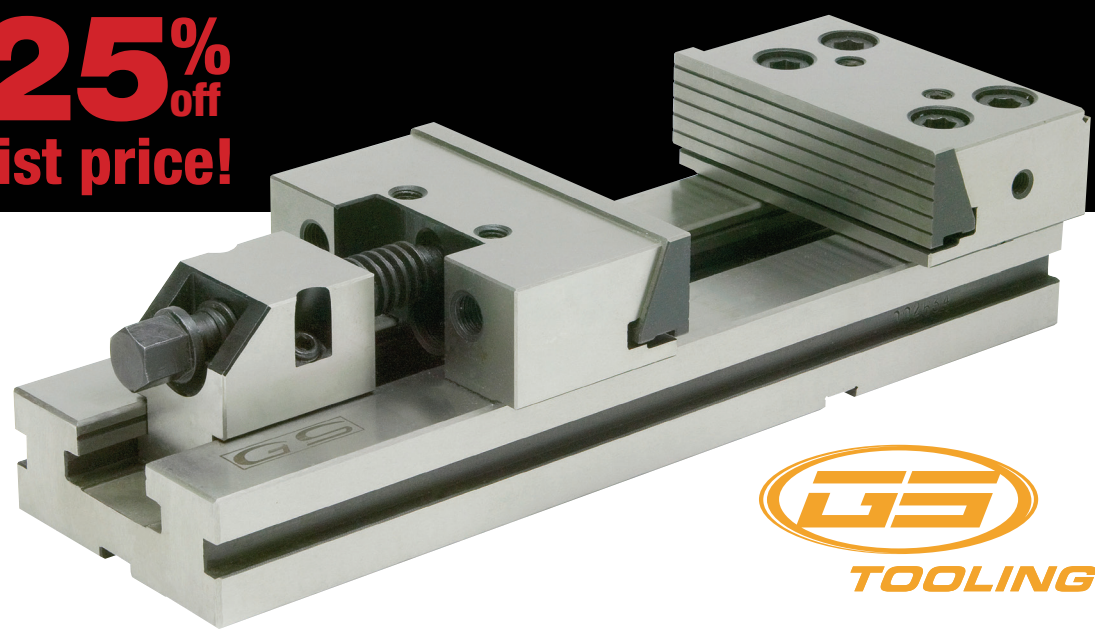


# ADVANCED TOOLING SUPPLIES TOOLING YOUR ATSTUESDAYATS

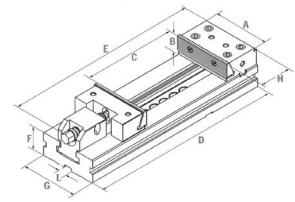
Pricing valid **August 15 - 21, 2023**, while quantities last.

**25%  
off  
list price!**



## GS Plain Base Modular Vises

- High accuracy
- Unlimited clamping range
- High quality alloy steel
- High clamping pressure
- No jaw lift
- All vises are matched



Model	Jaw Width (A)	Opening (C)	Jaw Height (B)	Code No.	Price \$	SALE \$
4	7	8	2.4	382020	2,056.28	1,542.21
4	7	12	2.4	382025	2,174.12	1,630.59
4	7	16	2.4	382030	2,415.69	1,811.77
4	7	20	2.4	382032	2,896.86	2,172.65
5	8	12	2.6	382040	3,140.40	2,355.30
5	8	20	2.6	382050	4,348.24	3,261.18
6	12	24	3.2	382075	7,486.68	5,615.01

### Modular Vise Specs

Vise Size	Code No.	D	E	F	G	H	I	Kgs
7 x 8	382020	17.913	24.80	2.283	5.8	3.876	0.64	37
7 x 12	382025	21.85	24.80	2.283	5.8	3.876	0.64	42
7 x 16	382030	25.787	24.80	2.283	5.8	3.876	0.64	47
7 x 20	382032	29.724	24.80	2.283	5.8	3.876	0.64	52
8 x 12	382040	23.425	28.74	2.756	6.8	4.536	0.64	69
8 x 20	382050	31.299	28.74	2.756	6.8	4.536	0.64	79
12 x 24	382075	36.811	32.67	3.07	7.67	4.74	0.64	135

●● \*Shipping charges apply & will be noted on invoice ●●

**ADVANCED TOOLING SUPPLIES: 1-800-263-1796**



**Sowa Tool & Machine Co. Ltd.**  
 Kitchener Office  
 500 Manitou Drive, Kitchener, ON, N2C 1L3  
 Western Canada Office  
 9649-49th Avenue, Edmonton, AB, T6E 5Z5

TF: 1-800-265-8221  
 Tel: 519-748-5750  
 Fax: 519-748-9304  
 sales@sowatool.com  
 www.SowaTool.com

We reserve the right to make pricing changes or impose purchase restrictions at any time, and accept no liabilities for mistakes and printing errors. Shipping charges apply & will be noted on invoice. All taxes extra.